

## STANDARD SPECIFICATION

- One side operation
- 480mm lift
- Wide back mounting plate
- Flat pivot foot standard
- Optional Air foot & Rocker foot
- Winding handle, support bracket & Cross
- Shaft supplied
- Meets TTMA, AAR and German Safety regulations for commercial vehicles

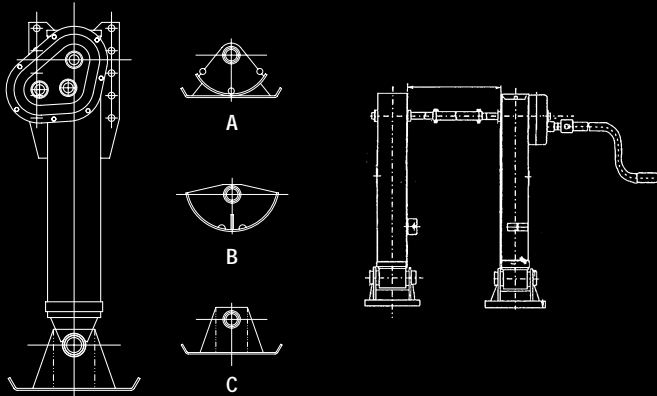
## TECHNICAL DATA

Capacity	28000 kg/pair
Static load	80000 kg/pair
Weight	108 kg/pair
Mounting plate	230x345 190 centres 5 holes at 57 crs 17 dia holes
Lift	480mm
Lift per Turn	
Low gear	1.05mm
High gear	8.25mm
Crank force at 28T	35 kg

# SEMI-TRAILER LANDING GEAR

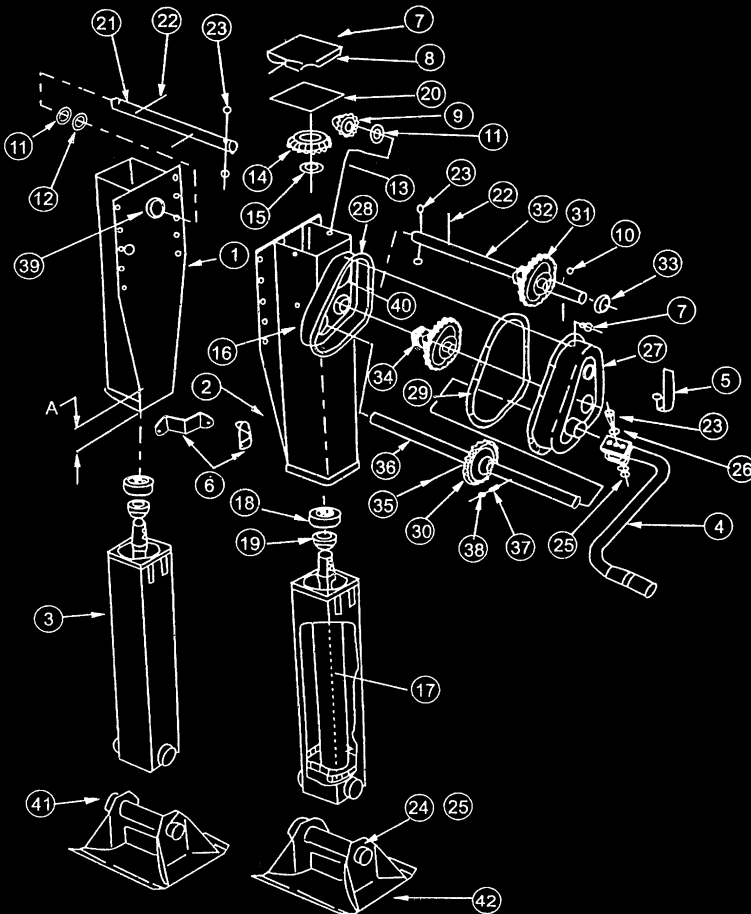


## Dimensional Detail



TYPES	PARTS NO	LIFT	HEIGHT	TOTAL HEIGHT
280002	A	480	866	1346
280002	B	480	848	1328
280002	C	480	840	1320

## Parts List



ITEM	PART NUMBER	DESCRIPTION	QTY
1	290001	Upper housing – ungeared leg	1
2	290002	Upper housing – geared leg	1
3	290003	Inner leg assembly	2
4	290004	Crank handle – universal	1
5	290005	Crank handle bracket	1
6	290006	Strut bracket	2
7	290007	Screw, gearbox cover	11
8	290008	Cover, top of leg	2
9	290009	Pinion gear	2
10	290010	Woodruff key	3
11	290011	Thrust washer – geared leg	2
12	290012	Thrust washer – ungeared leg	2
13	290013	Grooved pin (roll pin)	2
14	290014	Bevel gear	2
15	290015	Washer	2
16	290016	Grease valve	3
17	290017	Shift shaft support	2
18	290018	Thrust bearing	2
19	290019	Collar	2
20	290020	Cover gasket	2
21	290021	Jack shaft – ungeared leg	1
22	290022	Roll pin	4
23	290023	Bolt for handle and cross shaft	3
24	290024	Bolt for axle shaft	2
25	290025	Nyloc nut for axle shaft bolt	5
26	290026	Flat washer	6
27	290027	Gearbox outer cover	1
28	290028	Gearbox inner housing	1
29	290029	Gasket – gearbox cover	1
30	290030	Input gear	1
31	290031	Output gear	1
32	290032	Jackshaft – geared leg	1
33	290033	Spacer bushing	1
34	290034	Idler gear	1
35	290035	Groove pin	1
36	290036	Shift shaft	1
37	290037	Shift lock spring	1
38	290038	Shift lock ball	1
39	290039	Bushing	2
40	290040	Shoe boss	1
41	290041	Shoe axle	2
42	290042	Shoe	2