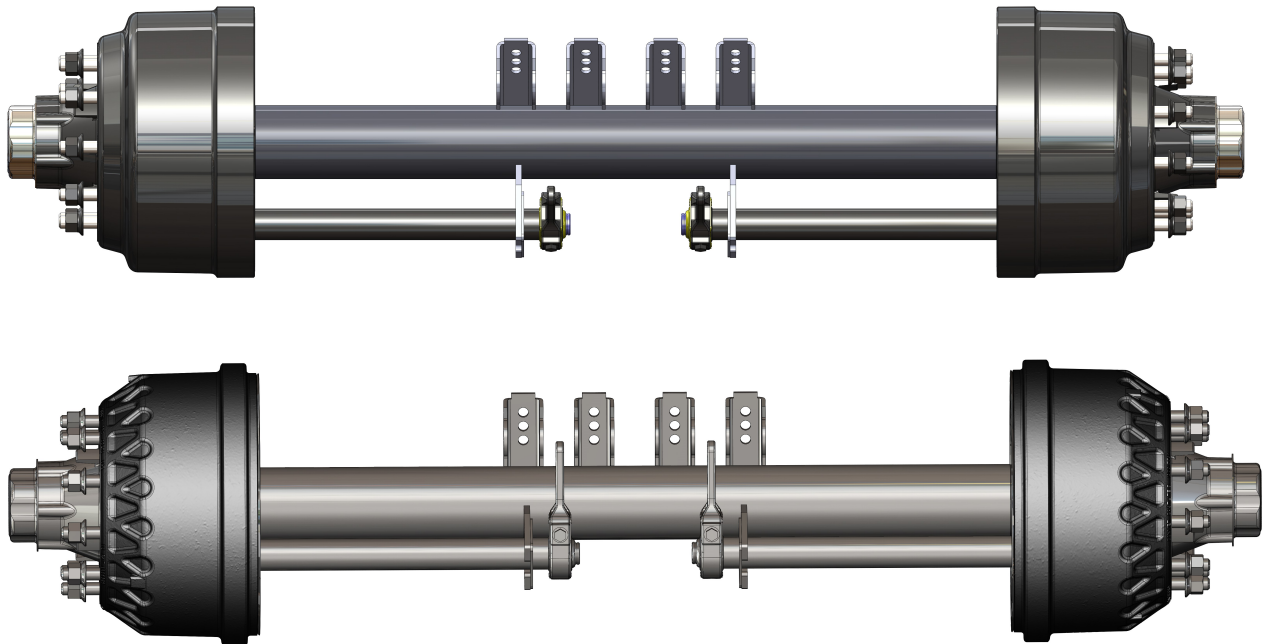




TMC Australia Pty Ltd

TMC Trailer Axle Service Manual – Drum Brakes

TMC DRUM BRAKE AXLE SERVICE MANUAL



TMC Australia Pty Ltd
78 Star Crescent
Hallam
Victoria 3803 Australia

Telephone: + 61 3 8786 3688
Facsimile: + 61 3 8786 3699
E-Mail: info@tmcaus.com.au
www.tmcaustralia.com.au

TMC Australia's policy is one of continuous development, we therefore reserve the right to change or modify the specifications without notification.

We Engineer Quality and Performance



TMC Australia Pty Ltd

TMC Trailer Axle Service Manual – Drum Brakes

RECOMMENDED SERVICE SCHEDULE

First Service 500 km or on Delivery:

- Check torque settings of all wheel nuts - On delivery.
- After all wheel changes.

After first 5000 Km:

Check and adjust all wheel bearings.

Every 5,000 km:

Check and adjust the brakes, check brake linings for wear.

Every 25,000 km:

Lubricate slack adjusters and camshaft bushings using an EP2 type grease or equivalent.
With the axle end lifted rotate the wheels and determine if the wheel bearing's need adjustment.
Re adjust the wheel bearings as necessary.

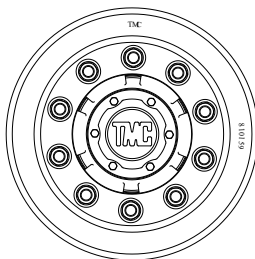
Every 100,000 km:

Remove the hubcaps and inspect the wheel bearings and lubricant.
Replace the lubricant if it appears badly contaminated.
Re adjust the wheel bearings and re torque the axle lock nut.
Replace the hubcaps and ensure the correct amount of lubricant is in the hub end.
Check that the hubcap gasket and inboard seal is not damaged. Replace as necessary.
Check the axle for brake wear, check the rest of the axle components for wear or damage.
Repair, adjust or replace as necessary.

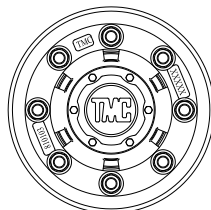
Every 300,000 km:

Remove wash and inspect the wheel bearings, replace as necessary.
When re assembling the wheel bearings, ensure they are correctly lubricated and adjusted.
See TMC Australia's recommended wheel bearing adjustment procedures.

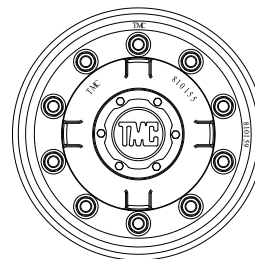
Note: TMC's range of "LMV", "LMVS", "SL10", and "TL12" suspensions, TN, TP, UB90 and UB82 trailer axle combinations are generally designed for operating on clean paved roads. Although occasional use on graded or gravel roads is acceptable, for equipment that is regularly used "off-road" or "off-highway" TMC recommends that service intervals should be halved. In extremely severe operating conditions, weekly and in certain cases even daily inspections of the equipment may be required to ensure safe and correct operation of the suspension and axle combination.



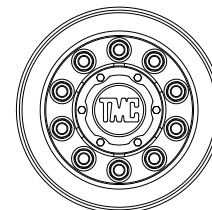
10 Stud x 285 pcd Hub
420 x 180 Brake



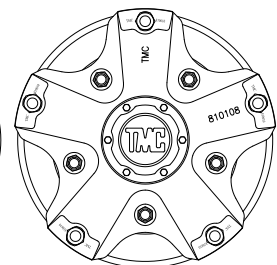
8 Stud x 275 pcd Hub
335 x 210 Brake



10 Stud x 335 pcd Hub
420 x 180 Brake



10 Stud x 225 pcd Hub
335 x 210 Brake



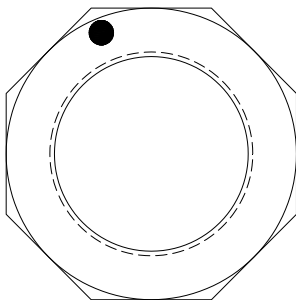
5 Spoke Spider Hub
420 x 180 Brake

WHEEL BEARING ADJUSTMENT PROCEDURE**Double Axle Lock Nuts and Lock Washer – TN Wheel Bearings.**

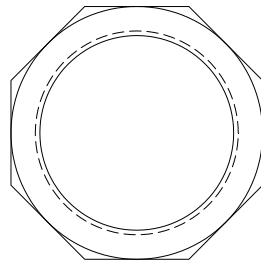
It is recommended that the wheel bearings in new axles (or whenever the wheel bearings are replaced in service) are adjusted after the first 5000 km. The wheel bearings should then be adjusted at 100,000 km intervals for the axle's service life. These are the minimum recommended service requirements, dependent on service conditions more frequent service and maintenance schedules may be required for correct operation of the trailer axle.

Recommended wheel bearing adjustment procedure:

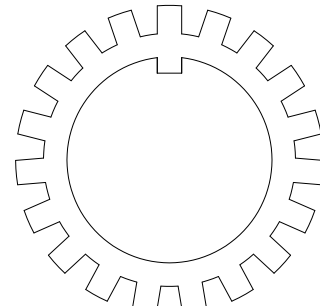
1. Ensure that the hub rotates freely in both directions. If any brake drag (binding) is felt temporarily back off the brake adjustment to ensure free rotation of the hub.
2. Rotate the hub in both directions and at the same time tighten the wheel bearing adjusting nut until a torque setting of 150/180 Nm is reached.
3. Then back off the adjusting nut five (5) holes, use the axle lock washer as a guide. Refit the axle lock washer, taking care that the wheel bearing adjustment is not disturbed. Fit the lock tab washer. Fit the axle locknut and tighten to a torque of 350/400 Nm.
4. Check the bearing end float is 0.08mm to 0.20mm. Finally check that the hub rotates freely. If it does not rotate freely it may be necessary to redo the wheel bearing adjustment procedure. If necessary, now re adjust the brakes.
5. Bend two of the tabs (one on opposite side) on the lock tab washer over to prevent the locknut from coming loose in service.



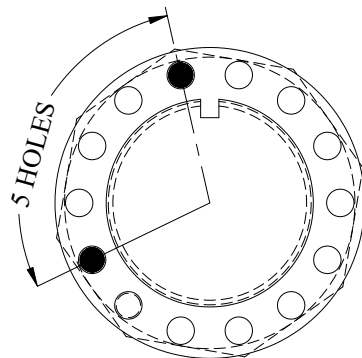
SPINDLE ADJUSTING NUT



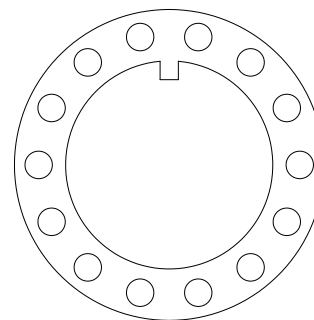
SPINDLE LOCK NUT



LOCK TAB WASHER



USE THE LOCK WASHER
AS A GUIDE, SLACKEN
BACK BY 5 HOLES



LOCK WASHER

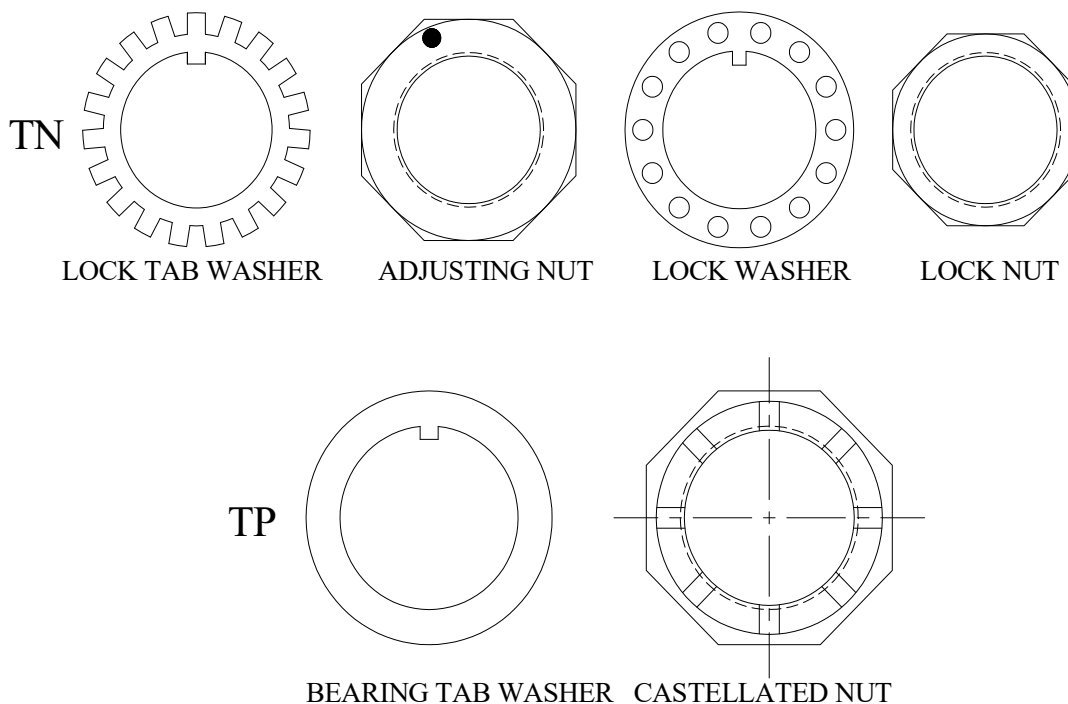
**CHECK WHEEL BEARING END FLOAT IS 0.08mm TO 0.20mm.
RE ADJUST IF NECESSARY.**

WHEEL BEARING ADJUSTMENT PROCEDURE - PRESET**TN Double Axle Lock Nuts and Lock Washer****TP Castellated Nut and Split Pin**

It is recommended that the wheel bearings in new axles (or whenever the wheel bearings are replaced in service) are checked for end float after the first 5000 km. The wheel bearings should then be re checked for end float at 100,000 km intervals for the axle's service life. These are the minimum recommended service requirements, dependent on service conditions more frequent service and maintenance schedules may be required for correct operation of the trailer axle.

Recommended wheel bearing end float checking procedure:

1. Ensure that the hub rotates freely in both directions, back off brakes if necessary.
2. Rotate the hub in both directions and at the same time tighten the wheel bearing adjusting nut until a torque setting of 390/410 Nm is reached.
3. TN - Fit the axle lock washer onto the axle. Adjust the adjusting nut **TIGHTER** if necessary to get the lock washer properly seated onto the adjusting nut. Fit the lock tab washer then the axle locknut and tighten to a torque of 290/310 Nm. Bend two tabs of the lock tab washer against the lock nut.
TP – install the cotter pin. Adjust the Castellated nut tighter if necessary to install the cotter pin.
4. Check the bearing end float is 0.08mm to 0.20mm. Finally check that the hub rotates freely. If it does not rotate freely it may be necessary to repeat the wheel bearing adjustment procedure. Re adjust the brakes if necessary.

**Note:**

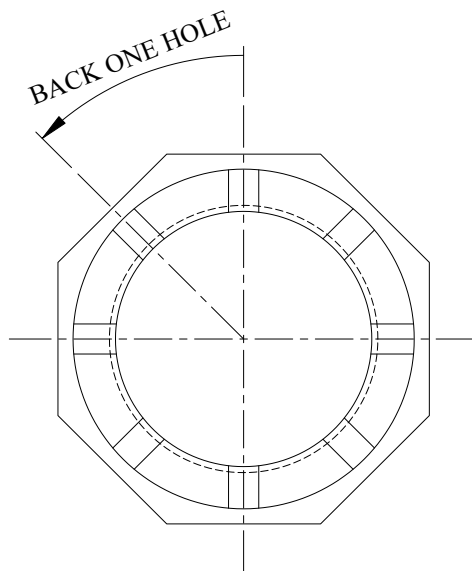
Preset wheel bearings are unique bearings and cannot be mixed with other bearing types. When being serviced or replaced bearing cups and cones must be kept as sets or replaced as full sets. The Preset bearing cups and cones must not be mixed.

WHEEL BEARING ADJUSTMENT PROCEDURE**Castellated Axle Nut with Split Pin – TP (Parallel) Wheel Bearings.**

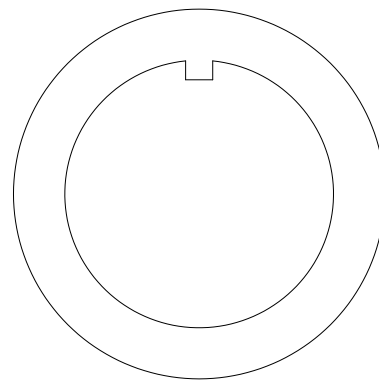
It is recommended that the wheel bearings in new axles (or whenever the wheel bearings are replaced in service) are adjusted after the first 5000 km. The wheel bearings should then be adjusted at 100,000 km intervals for the axle's service life. These are the minimum recommended service requirements, dependent on service conditions more frequent service and maintenance schedules may be required for correct operation of the trailer axle.

Recommended wheel bearing adjustment procedure:

1. Ensure that the hub rotates freely in both directions. If any brake drag (binding) is felt temporarily back off the brake adjustment to ensure free rotation of the hub.
2. Rotate the hub in both directions and at the same time tighten the axle adjusting nut (castellated) until a torque setting of 150/180 Nm is reached.
3. Then back off the axle adjusting nut approximately one eighth of a turn, using the axle adjusting nut as a guide. Refit the axle cotter (split) pin and lock in place. Take care that the wheel bearing adjustment is not disturbed.
Check the bearing end float is 0.08mm to 0.20mm. Finally check that the hub rotates freely. If it does not rotate freely it may be necessary to redo the wheel bearing adjustment procedure. If necessary, now re adjust the brakes.



USE THE AXLE ADJUSTING NUT AS A GUIDE, SLACKEN BACK TO FIRST AVAILABLE SPLIT PIN HOLE.



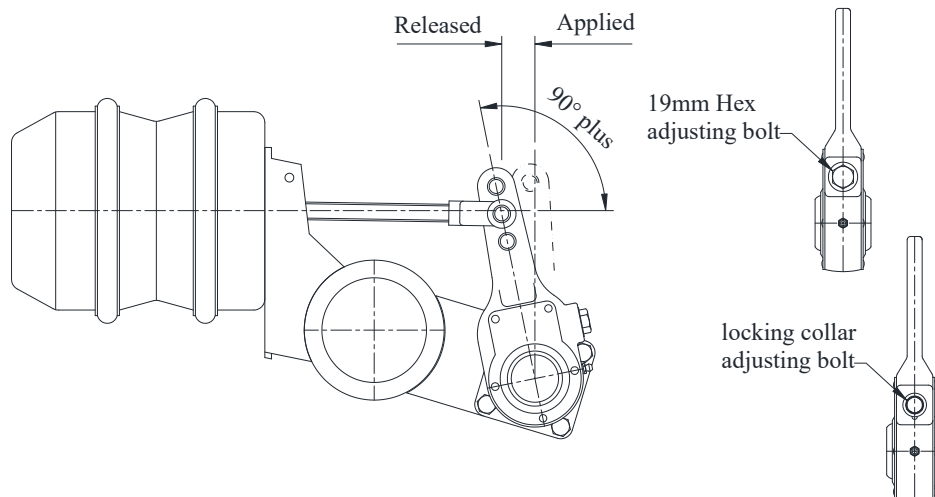
BEARING TAB WASHER

**CHECK WHEEL BEARING END FLOAT IS 0.08mm TO 0.20mm.
RE ADJUST IF NECESSARY.**

BRAKE ADJUSTMENT – MANUAL SLACK ADJUSTERS

‘S’ Cam brakes are adjusted by the manual slack adjusters fitted to the camshafts on the axle.

1. With the spring brakes released, adjust the slack adjuster until the brake linings contact the brake drum. This is done by rotating the 19mm adjusting bolt clockwise. Note: Locking collar slack adjusters are also used depending on the axle model. The locking collar must be pushed down before the adjusting bolt can be adjusted. Ensure the locking collar springs back and locks the adjusting bolt after brake adjustment has been completed.
2. Adjust the adjusting bolt counter clockwise approximately $\frac{1}{4}$ turn until the hub just rotates freely with no brake drag.
3. Finally check that with the brakes released and applied the angle between the brake chamber push rod and slack adjuster is greater than 90 degrees. The angle can be adjusted by screwing the push rod clevis backwards or forwards along the push rod thread to achieve the correct angle. When finished, always check that the push rod clevis lock nut is tightened.



BRAKE ADJUSTMENT - MANUAL SLACK ADJUSTER.

BRAKE ADJUSTMENT – AUTOMATIC SLACK ADJUSTERS

‘S’ cam brakes fitted with automatic slack adjusters should require no manual adjustment after the initial installation on the axle or initial re adjustment of the brakes after brake relines. All automatic slack adjusters have a specific set up and installation procedure as specified by the automatic slack adjuster manufacturer. Refer to TMC’s ‘Automatic Slack Adjuster Installation Procedure’ or your slack adjuster suppliers’ instructions.

Generally, automatic slack adjusters must be re adjusted similarly to the manual slack adjusters on initial installation or after brake relines.

Caution: Please refer to the manufacturer’s recommendations.

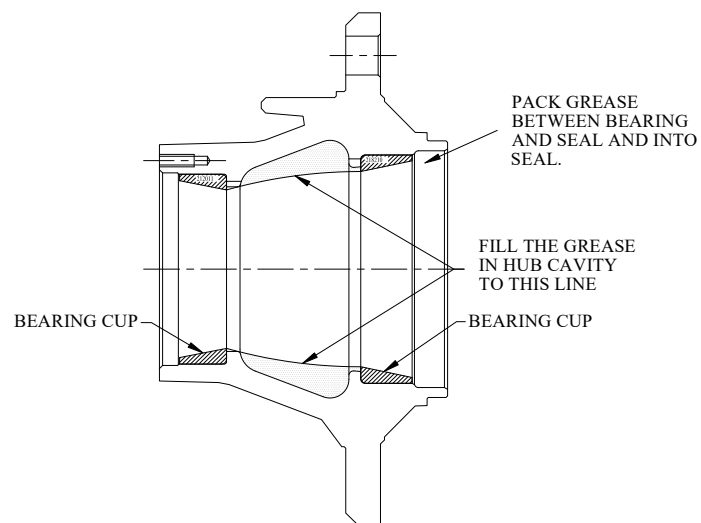
AXLE HUB LUBRICATION

Grease Filled Hubs:

1. The wheel bearings must be fully packed with grease, it is recommended that a wheel bearing packer or suitable equipment is used to correctly pack the wheel bearings with grease.
2. Fill the hub cavity with grease as shown. The cavity is to be filled to a line running from inner bearing cup inner diameter to outer bearing cup inner diameter.

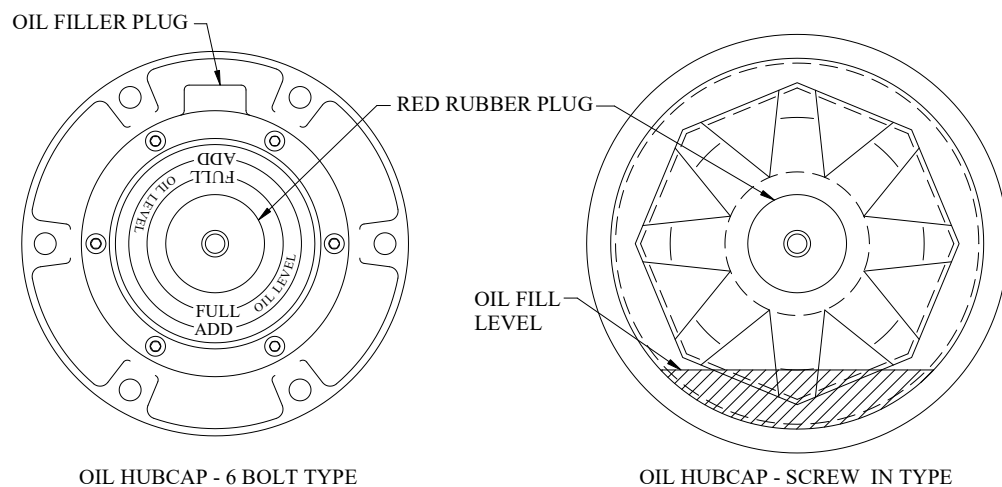
Caution: Do not overfill the hub cavity.

3. Apply grease to the cavity between the inner bearing and the seal. Ensure grease is lightly packed into the seal. Apply a light smear of grease to the complete spindle including the seal running surface, nuts and lock washers.



Oil Filled Hubs:

1. Remove the rubber plug or screwed plug from the hubcap so that the oil can be added to the hub.
2. Fill the hub with oil to the full level on the sight glass in the hubcap window.
3. Allow time for the oil to flow through the wheel bearings. Top up the hub with oil to the full mark. **Caution: Do not overfill the hub.**
4. Refit the rubber plug or screwed plug back into the hubcap. Check that the plug seals.





TMC Australia Pty Ltd

TMC Trailer Axle Service Manual – Drum Brakes

WHEEL BEARING LUBRICANTS

Grease: Mobil XHP222 or equivalent lithium complex grease.
Oil: Mobil 85W/140 or an approved equivalent oil.

WELDING TO TMC AXLE BEAMS

Recommended welding procedures:

1. Before any welding (including spot welding) is conducted, the axle tube **must** be pre heated to 150 – 200⁰C at the area to which the welding is to be done.
Caution: Do not apply excessive heat to the axle tube.
2. All welding is to be applied to the axle tube as near as possible to the axle's neutral axis.
Do not weld circumferentially around the axle tube.
3. All welds must be conducted using low hydrogen rods or an approved equivalent MIG process.
Grounding/Earth wire must be attached directly to axle beam not to the hub or hub components.

TORQUE SETTINGS CHART

Wheel nuts:

M22 ISO wheel studs - 550/600 Nm.
¾” Unc Spider wheel studs - 200/260 Nm.

Inner Camshaft Bracket Bolts:

M10 bolt and nut - 30/35 Nm.

Dust Cover Bolts:

M8 studs - 20/25 Nm.

Hub Cap Bolts:

M8 studs - 20/25 Nm.
5/16” Unc studs - 20/25 Nm.

Brake Booster Nuts:

M16 x 1.5 -180-210 Nm

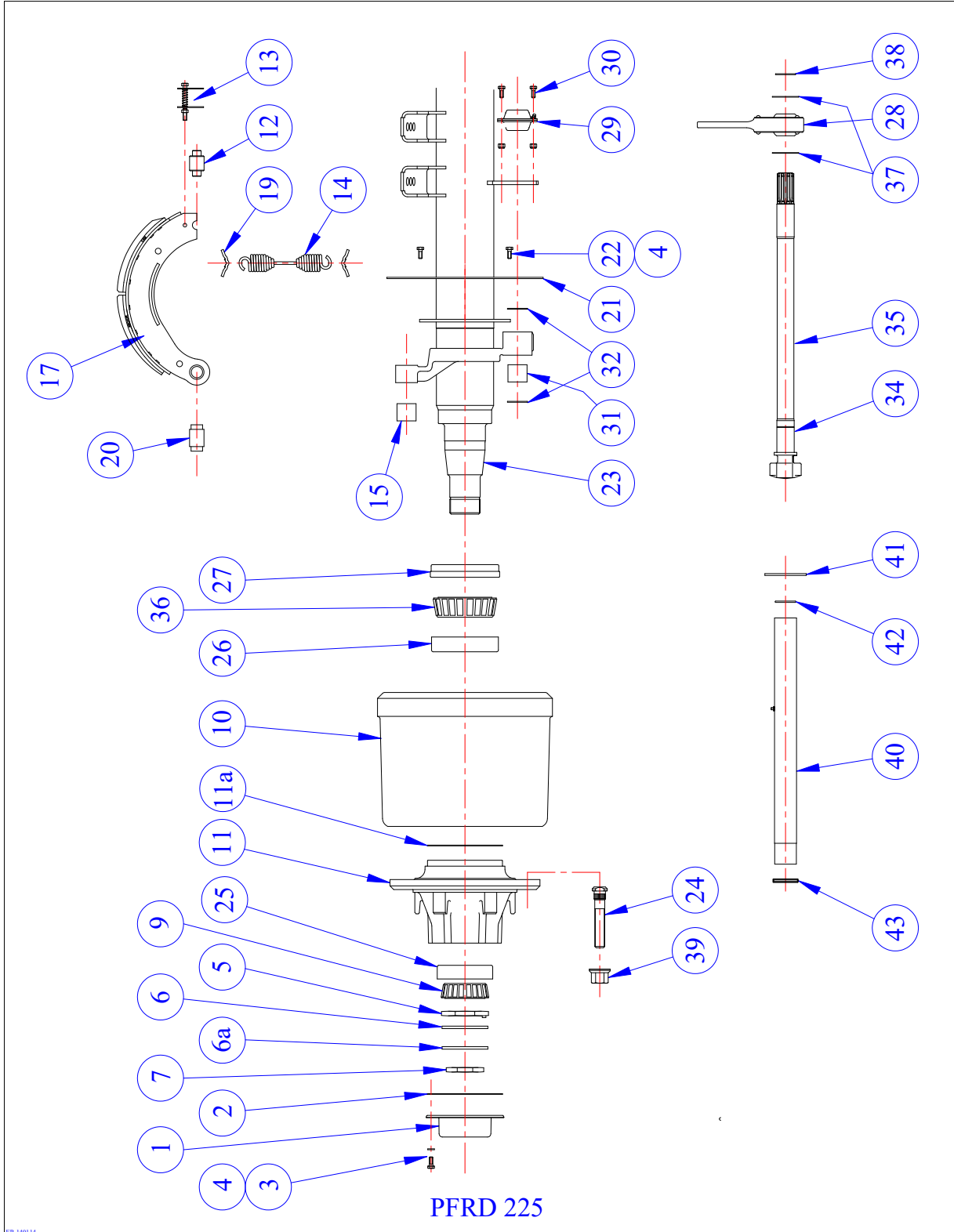


TMC Australia Pty Ltd

TMC Trailer Axle Service Manual – Drum Brakes

SPARE PARTS - AXLE MODELS PFRD-225-138 and PFRD-245-138

Axles with 335 diameter x 210 wide 'S' cam brakes (13.18" x 8.25").





TMC Australia Pty Ltd

TMC Trailer Axle Service Manual – Drum Brakes

SPARE PARTS - AXLE MODELS PFRD-225-138

Axles with 335 diameter x 210 wide ‘S’ cam brakes (13.18” x 8.25”).

Item	TN Model PFRD-225-138 Part Number	Description
1	810146	Hub cap – grease
	810176	Hub cap – oil
2	810147	Hub cap gasket
3	9HBM08125020	Hub cap stud M8 x 20 long
4	9SWM08	Spring washer
5	810124	Axle spindle adjusting nut
6	810123	Axle spindle lock washer
6a	810284	Lock tab washer
7	810125	Axle spindle lock nut
9	81HM212049	Outer bearing cone
10	810103	Brake drum – 8 stud x 275 pcd 335x210
	810185	Brake drum – 10 stud x 225 pcd 335x210
11	810196	Hub assembly – 8 x 275 ISO steel
	810187	Hub assembly – 10 x 225 ISO steel
	810023565	Hub assembly – 8 x 275 ISO aluminium
11a	810169-100 or -80	ABS pole wheel – 100 or 80 tooth **
12	810094	Cam roller
13	800018	Cam roller retainer
	810093	Cam roller retainer – bolt on
14	810101	Brake return spring
15	800002	Anchor pin bush
17	810095	Brake shoe lined – P brake
19	800013	Brake return spring retainer pin
20	810092	Anchor pin – P brake bolt on
21	810084	Dust cover
22	9HBM08125025	Dust cover bolt M8 x 25 long
23	810142/contact TMC	Axle beam assembly
24	810148	Wheel stud – M22 ISO x 125mm (long)
	810144	Wheel stud – M22 ISO x 100mm (short)
25	81HM212011	Outer bearing cup
26	81HM218210	Inner bearing cup
27	810135/02	Hub seal
28	810120	Slack adjuster (manual) – Contact TMC for autoslack options
29	810059	Inner cam bush
30	9HBM10150030	Bolt M10 x 30 long
31	810061	Outer cam bushing
32	810081	Camshaft seal
33	810122	Camshaft washer
34	800034	Camshaft circlip – 1.5
35	810105/616L	Camshaft 10 spline - left hand
	810105/616R	Camshaft 10 spline - right hand
36	81HM218248	Inner bearing cone
37	810122	Camshaft washer
38	810121	Camshaft circlip
39	810145	Wheel nut – M22 ISO
40	810091	Enclosed cam tube assembly
41	810087	Enclosed cam tube support plate
42	810081	Enclosed cam tube seal – inner
43	810082	Enclosed cam tube seal – outer
44		Split Pin
45	800033	Camshaft washer
**	Contact TMC	ABS sensor, sensor bush, block and pole wheel

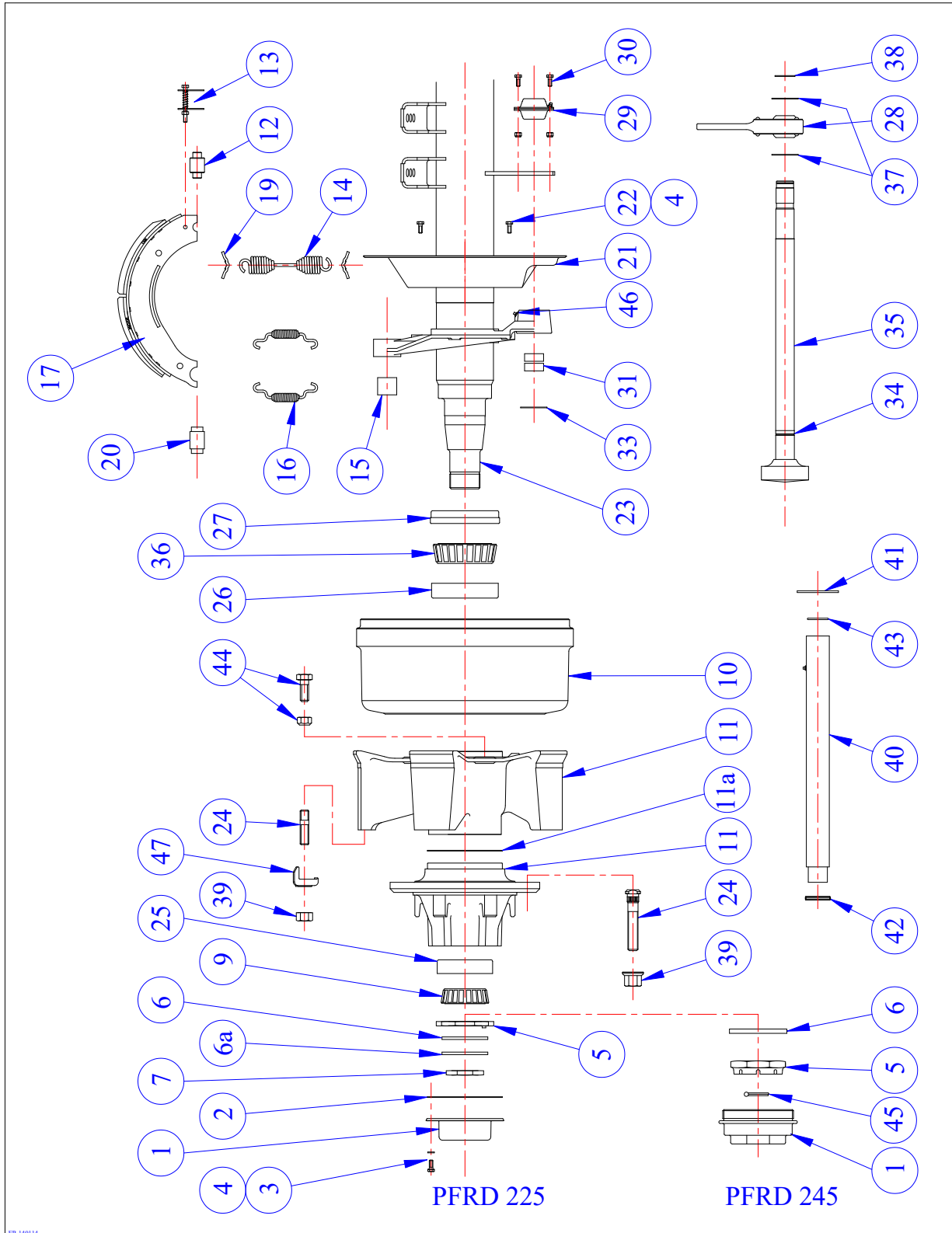


TMC Australia Pty Ltd

TMC Trailer Axle Service Manual – Drum Brakes

SPARE PARTS - AXLE MODELS PFRD-225-167 and PFRD-245-167

Axles with 420 diameter x 180 wide 'S' cam brakes (16.5" x 7").



ER 140114



TMC Australia Pty Ltd

TMC Trailer Axle Service Manual – Drum Brakes

SPARE PARTS - AXLE MODELS PFRD-225-167 and PFRD-245-167

Axles with 420 diameter x 180 wide 'S' cam brakes (16.5" x 7").

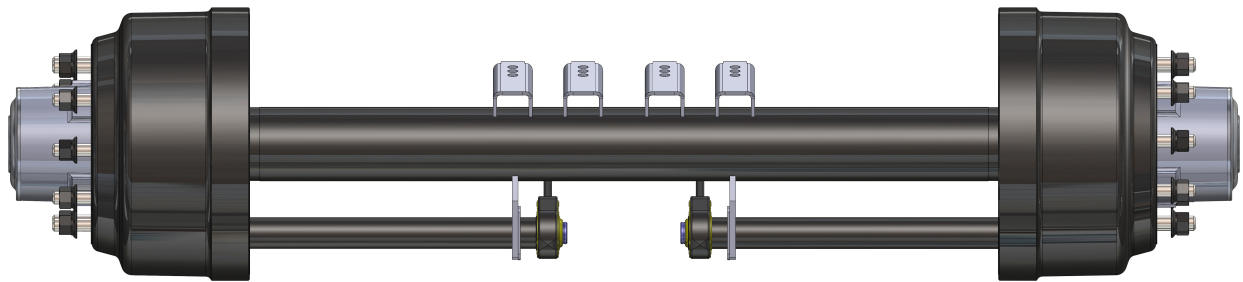
Item	TN Model PFRD-225-167 Part Number	TP Model PFRD-245-167 Part Number	Description
1	810146	804345	Hub cap – grease
	810176		Hub cap – oil
2	810147		Hub cap gasket
3	9HBM08125020		Hub cap stud M8 x 20 long
	9HB5/16UNC0.75		Hub cap stud 5/16-18 x ¾"long – (used on PreSet 10x285 hubs)
4	9SWM08		Spring washer
5	810124	800110	Axle spindle adjusting nut
6	810123	800111	Axle spindle lock washer
6a	810284		Lock tab washer
7	810125		Axle spindle lock nut
9	81HM212049	81HM518445	Outer bearing cone (Non PreSet)
10	810110	810153	Brake drum – 5 spoke spider 420x180
	810160	810160	Brake drum – 10 stud x 285 pcd 420x180
	810214	810214	Centrifuse drum – 10x285 pcd 420x180
	810037763	810001778	TruTurn drum – 10x285 pcd 420x180
	810158	810158	Brake drum – 10 stud x 335 pcd 420x180
11	810108	810151	Hub assembly – 5 spoke spider
	810194	810166	Hub assembly – 10 x 285 ISO steel
	810192	800089/90	Hub assembly – 10 x 335 ISO steel
	810005477		Hub assembly – 10 x 285 ISO PreSet – aluminium
	810003416		Hub assembly – 10 x 335 ISO PreSet - aluminium
	810030806	810033378	Hub assembly -10 x 285 ISO PreSet - steel
	810037886	810037944	Hub assembly – 10 x 335 ISO PreSet - steel
	810081730	810005437	Hub rebuild kit – PreSet *non PreSet plus
11a	CONTACT TMC	CONTACT TMC	ABS pole wheel – 100 tooth **
12	810094	810094	Cam roller
13	800018	800018	Cam roller retainer
	810093	810093	Cam roller retainer – bolt on
14	800016	800016	Brake return spring
15	800002	800002	Anchor pin bush
16	800015	800015	Brake retainer spring – anchor end
17	800267	800267	Brake shoe lined – Q brake
	810170	810170	Brake shoe lined – P brake
19	800013	800013	Brake return spring retainer pin
20	800014	800014	Anchor pin – Q brake
	810092	810092	Anchor pin – P brake bolt on
21	800003	800003	Dust cover
22	9HBM08125025	9HBM08125025	Dust cover bolt M8 x 25 long
23	810130/contact TMC	810139/contact TMC	Axle beam assembly
24	810112	810112	Wheel stud – spider hub
	810148	810148	Wheel stud – M22 ISO x 125mm (long)
	810144	810144	Wheel stud – M22 ISO x 100mm (short)
25	81HM212011	81HM518410	Outer bearing cup – (Non PreSet)
26	81HM218210	81HM518410	Inner bearing cup – (Non PreSet)
27	810135/02	800723	Hub seal
28	800052	800052	Slack adjuster (manual) – Contact TMC for autoslack options
29	81A5885	81A5885	Inner cam bush
29a	810018	810018	Inner plate
29b	810019	810019	Outer plate
30	9HBM10150030	9HBM10150030	Bolt M10 x 30 long
31	81A5861	81A5861	Outer cam bushing
33	800033	810033	Camshaft washer 1 5/8"
34	800034	800034	Circlip 1 ½"
35	810117/606L	810117/606L	Camshaft 37 spline - left hand
	810117/606R	810117/606R	Camshaft 37 spline - right hand
36	81HM218248	81HM518445	Inner bearing cone – (Non PreSet)
37	810122	810122	Camshaft washer 1 ½"
38	810121	810121	Circlip 1 3/8"
39	810113	810113	Wheel nut – spider
	810145	810145	Wheel nut – M22 ISO
40	810206	810206	Enclosed cam tube assembly
41	810201	810201	Enclosed cam tube support plate
42	810208	810208	Enclosed cam tube seal – outer
43	810207	810207	Enclosed cam tube seal – inner
44	810114	810114	Hub drum bolt and conelock nut assy. ¾"UNF x 2¼"
45		9SP8.0x120	Split Pin
46	9GNM0845	9GNM0845	Grease nipple – M8x1 45degrees
47	810610	810610	Spider rim clamps
**	Contact TMC	Contact TMC	ABS sensor, sensor bush, block and pole wheel



TMC Australia Pty Ltd

TMC Trailer Axle Service Manual – Drum Brakes

TMC TRAILER AXLE UNITISED BEARINGS MANUAL



TMC Australia Pty Ltd
78 Star Crescent
Hallam
Victoria 3803 Australia

Telephone: + 61 3 8786 3688
Facsimile: + 61 3 8786 3699
E-Mail: info@tmcaus.com.au
www.tmcaustralia.com.au

TMC Australia's policy is one of continuous development, we therefore reserve the right to change or modify the specifications without notification.

We Engineer Quality and Performance



TMC Australia Pty Ltd

TMC Trailer Axle Service Manual – Drum Brakes

RECOMMENDED SERVICE SCHEDULE.

First Service 500 km or on Delivery:

- Check torque settings of all wheel nuts
 - On delivery.
 - After all wheel changes.

Every 5,000 km:

- Check and adjust the brakes, check brake linings for wear.

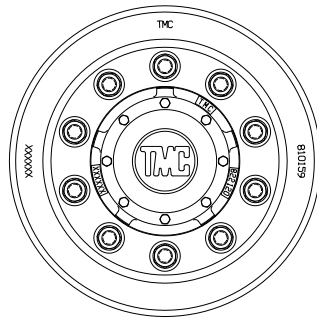
Every 25,000 km:

- Lubricate slack adjusters and camshaft bushings using an EP2 type grease or equivalent.

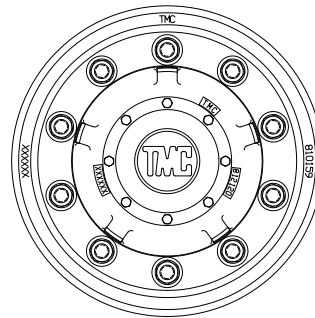
Every 100,000 km:

- With the axle end lifted rotate the hubs and determine if the wheel bearing has excessive movement or noise. If in doubt, please contact TMC or its approved service outlet.
- Inspect hubcap and check for signs of damage to the gasket. Replace gasket if damaged.
- Check inboard hub seal for leakage or damage, remove hub and replace seal if necessary.
- Check the brake components for wear. Replace if necessary.

Note: TMC's range of "LMV", "LMVS", "SL10", and "TL12" suspensions, TN, TP, UB90 and UB82 trailer axle combinations are generally designed for operating on clean paved roads. Although occasional use on graded or gravel roads is acceptable, for equipment that is regularly used "off-road" or "off-highway" TMC recommends that service intervals should be halved. In extremely severe operating conditions, weekly and in certain cases even daily inspections of the equipment may be required to ensure safe and correct operation of the suspension and axle combination.



10 Stud x Ø285.75 PCD Hub
Ø420 x 180 Drum Brake



10 Stud x Ø335.0 PCD Hub
Ø420 x 180 Drum Brake

APPLICATION OF GREASE INTO HUB.

1. It is required to partially fill the cavity in between the seal and bearing with grease. This additional grease will extend the seal and bearing life by preventing contaminants entering into the bearing assembly. If there are any questions, please contact TMC engineering.

Type of grease: **Mobil grease XHP 222 OR an approved equivalent.**

Quantity: **50g to 100g.**

**AXLE SPINDLE NUT TIGHTENING PROCEDURE.**

1. Fit the axle spindle nut (part 812103) onto the axle spindle and tighten to 1200 Nm. Re check the torque to ensure 1200 Nm. Ensure that a light smear of oil or grease is applied to the axle spindle thread area before installing the axle spindle nuts.
2. Fit the axle lock tab washer (part 812118) onto the axle spindle.
3. Fit the axle spindle lock nut (part 812104) onto the axle spindle and tighten to 1000 Nm.
4. Bend the lock tab washer tabs both inwards over the axle spindle nut and outwards over the axle spindle lock nut to ensure they cannot move. Apply a light smear of grease over all the parts on the axle spindle end to prevent rusting. Finally refit the axle hubcap and gasket onto the axle hub end. Tighten the hubcap studs (M8) to 20 / 25 Nm.

TORQUE SETTINGS CHART.

Axle spindle nut M90	- 1200 Nm.
Axle spindle lock nut M90	- 1000 Nm.
Wheel nuts M22 ISO	- 550/600 Nm.
Inner Camshaft Bracket bolts M10	- 30/35 Nm.
Hub Cap and dust cover bolts M8	- 20/25 Nm.



TMC Australia Pty Ltd

TMC Trailer Axle Service Manual – Drum Brakes

SPARE PARTS - AXLE MODEL PFRD-UB90-167.

Axles with 420 diameter x 180 wide 'S' cam brakes (16.5" x 7").

Item	Model PFRD-U90-167 Part Number	Description
1	822159	Hub cap – grease
2	822158	Hub cap gasket
3	9HBM08125025	Hub cap stud M8 x 25 long
4	9SWM08	Spring washer M8
5	812103	Axle spindle adjusting nut – M90
6	812118	Axle spindle lock tab washer
7	812104	Axle spindle lock nut – M90
8	812100	Hub – 10 x 285 ISO steel
	812163 *	Hub assembly – 10 x 285 – *includes items 8,9,10, 12, 13, 14
	812120	Hub – 10 x 335 ISO steel
9	810144	Wheel stud – M22 ISO x 100mm (short)
	810148	Wheel stud – M22 ISO x 125mm (long)
10	810145	Wheel nut – M22 ISO
11	810160	Brake drum – 10 stud x 285 pcd – 420 x 180 brake
	810214	Centrifuse drum – 10x285 pcd 420x180
	810037763	TruTurn drum – 10x285 pcd 420x180
	810158	Brake drum – 10 stud x 335 pcd – 420 x 180 brake
12	812108	Unitised wheel bearing assembly – 90mm diameter
13	812115	Lock ring - bearing
14	812107	Hub seal UB90
15	812111	Axle beam assembly – contact TMC
16	800002	Anchor pin bush
17	800015	Brake retainer spring – anchor end
18	800014	Anchor pin – Q brake
	810092	Anchor pin – P brake bolt on
19	800267	Brake shoe lined – Q brake
	810170	Brake shoe lined – P brake
20	812113	ABS ring – 100 tooth **
21	800013	Brake return spring retainer pin
22	800016	Brake return spring – cam end
23	810094	Cam roller
24	800018	Cam roller retainer
	810093	Cam roller retainer – bolt on
25	81A5861	Outer cam bush
27	800003	Dust cover
28	9HBM08125025	Dust cover bolt M8 x 25 long
29	81A5885	Inner cam bush
29a	810018	Inner plate
29b	810019	Outer plate
30	9HBM10150030	Bolt M10 x 30 long and nut assembly
31	810121	Circlip 1 3/8"
32	800052	Slack adjuster (manual) – Contact TMC for autoslack options
33	810122	Camshaft washer
34	810117/606L	Camshaft 37 spline - left hand (standard 606mm long)
	810117/606R	Camshaft 37 spline - right hand (standard 606mm long)
	810117/536L	Camshaft 37 spline - left hand (short 536mm long)
	810117/536R	Camshaft 37 spline - right hand (short 536mm long)
35	800034	Circlip 1 5/8"
36	800033	Camshaft washer
37	810201	Enclosed cam tube support plate
38	810207	Enclosed cam tube seal – inner
39	810206	Enclosed cam tube assembly
40	810208	Enclosed cam tube seal – outer
41	9GNM0845	Grease nipple – M8x1 45 degree
**	Contact TMC	ABS sensor, sensor bush, block and pole wheel

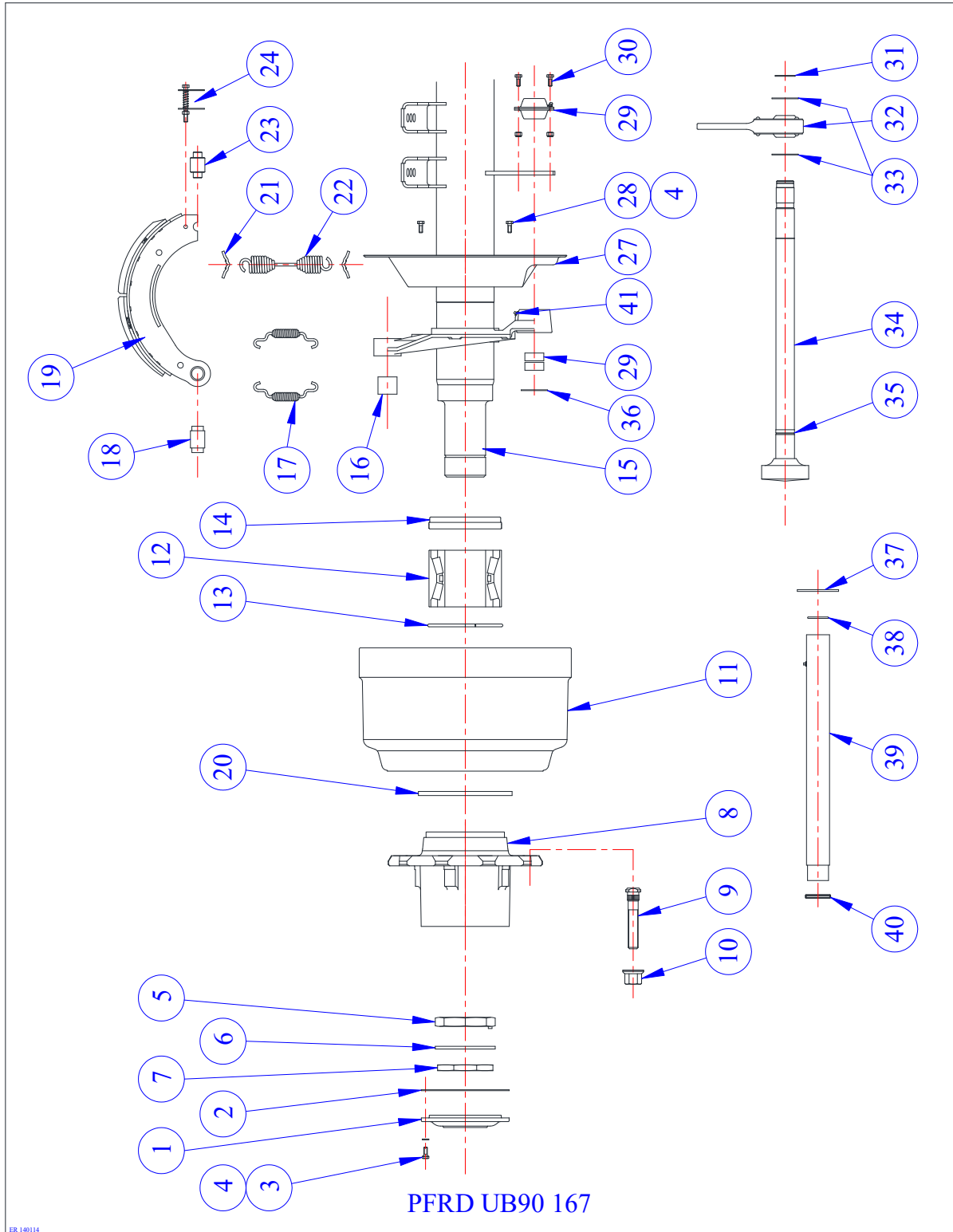


TMC Australia Pty Ltd

TMC Trailer Axle Service Manual – Drum Brakes

SPARE PARTS - AXLE MODEL PFRD-UB90-167.

Axles with 420 diameter x 180 wide 'S' cam brakes (16.5" x 7").



ER-140114