



TMC Australia Pty Ltd

Telephone: +61 3 87863688

Replacement Axle Beam Installation Checklist

Fascimile: +61 3 87863699

Customer:

Repair shop:

Make/Model of trailer:

Guideline/Checklist

Please tick upon completion

a. Tighten all fasteners to the recommended torque settings as shown below:

Recommended Torque Settings:

- | | | |
|--------------------------------|---------------------|--------------------------|
| 1. Pivot bolt** : | - 1100 Nm. (M30) | <input type="checkbox"/> |
| 2. Shock Absorber bolt M24**: | - 400 Nm. (M24) | <input type="checkbox"/> |
| 3. Shock Absorber bolt M20**: | - 300 Nm. (M20) | <input type="checkbox"/> |
| 4. Top Airbag mount nyloc nut: | - 70 Nm. (3/4" UNF) | <input type="checkbox"/> |
| 5. Top airbag mount bolt: | - 35 Nm. (3/8" UNC) | <input type="checkbox"/> |
| 6. Bottom airbag mount bolts: | - 35 Nm. (1/2" UNC) | <input type="checkbox"/> |
| 7. Front hanger spacer bolts: | - 70 Nm. (M12) | <input type="checkbox"/> |
| 8. U-bolts (SL10 & TL12) | - 800 Nm. (M24) | <input type="checkbox"/> |

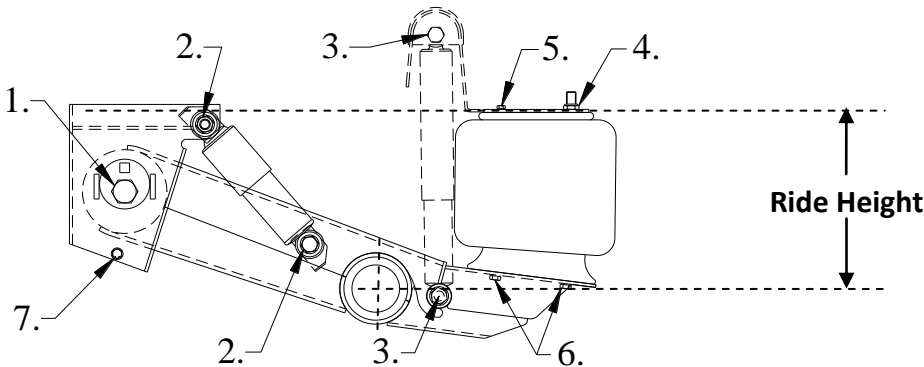


Figure 1: Fastener locations & ride height definition

Align and fit catch strap clip to groove

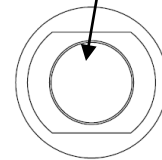


Figure 2: Shock absorber mount boss front view

**Tighten when suspension is at correct ride height

b. Shock absorber installation:

- Shock absorber straps fitted and securely fastened with catch strap clips.
- Ensure that the catch strap clip is in the correct position (clip should be seated in the mount boss groove.)

Assembled by: _____

Date: _____

Signature: _____

Please keep this document for your records.

Refer to TMC Service Manual for service schedule & maintenance info