

Subject: Cam Tube Replacement with New Double Grease Fitting Cam Tube

This Bulletin specifies how to install the new double grease fitting cam tube. Improvements over the old design are as follows:

- Longer life high quality Vesconite Outer bushing
- Grooved steel inner bushing
- Grease fittings tap directly into the bushings for improved grease ability.

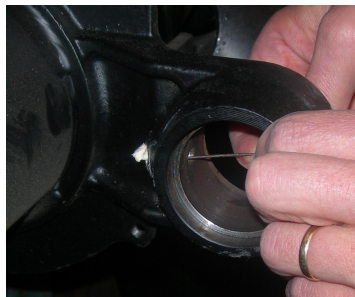
Parts List:	810206SB	Enclosed Cam Tube Kit – New Design – Per Axle	
	810206	Enclosed Cam Tube – New Design	2 pcs.
	810101	Inner Cam Mtg. Bracket	2pcs.
	810208	Enclosed Cam Seal Outer	2 pcs.
	810207	Enclosed Cam O Ring Inner	2 pcs.
	9GNM0845	Grease Nipple - Brake Spider	2 pcs.

Installation Steps as Follows:
1. Removing old cam tube.

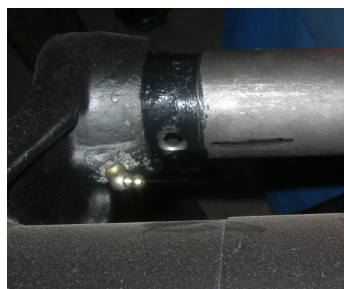
- Remove wheels, brakes, dust shield, hub, slack adjusters and cam.
- Remove 4 bolts holding cam tube in place
- Using a large vise grip and hammer drive the cam tube out of the brake spider. Note: The cam tube might be seized onto the spider and therefore the spider end of the cam tube might need to be peeled away from the spider with a chisel. Be careful not to damage the spider.

2. Prepare spider.

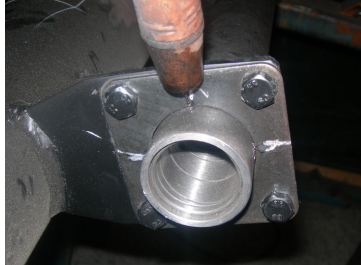
- Push out the silicon from the threaded hole and thread in 45 deg. Grease fitting.
- Mark grease hole location and apply Sicaflex to machined end of cam tube


3. Install Cam Tube.

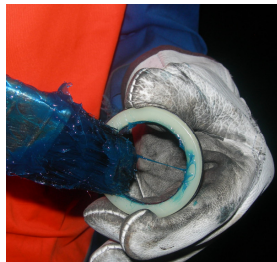
- Align cam tube hole and marked line with spider grease fitting and hammer completely into spider



- Bolt on cam tube bracket and spot weld in 4 locations. Do not over weld otherwise cam tube may distort.



4. Install cam shaft.
- Apply grease to inside of cam tube, outer cam shaft seal and cam shaft.



- Carefully install outer cam shaft seal into spider. Avoid damaging the O-rings.



- Slide cam shaft and outer 1 5/8" washer into cam tube. Ensure RH cam shaft is on RH side and LH cam shaft is on LH side.
- Install inner 1 1/2" washer



5. Install Slack Adjuster.
- Install slack adjuster, inner 1 1/2" washers and 1 3/8" circlip.
 - Grease cam tube inner and outer grease fittings.

