

Date: 03.04.2013 (Rev B)

Subject: Equaliser and Hanger Assembly

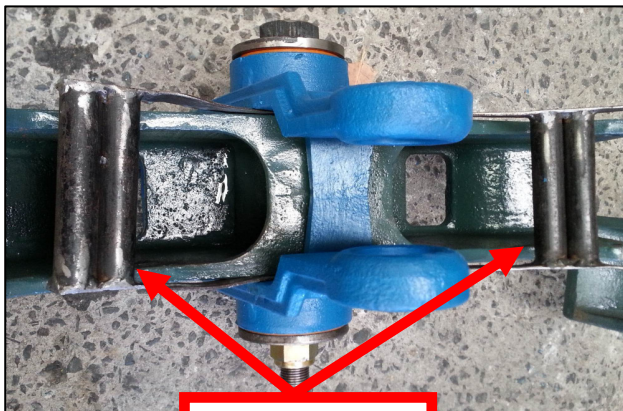
This Bulletin covers the assembly of equalizer and hangers using rubber and poly bushes.

Assembly Steps as Follows:

1. Assemble equaliser into hanger as shown. Ensure equaliser is straight and level in the assembly.



2. Oil the pins and apply sufficient anti-seize compound to the thread.
3. Lubricate bushes using 50% liquid soap and 50% water. **DO NOT SOAK** bushes.
4. Insert pin with bush into the assembly (Recommend to have nut facing outside of the trailer). Fit another bush into the opposite side. Tap bushes into castings to ensure that they are seated properly.
5. Insert 3mm steel spacer as shown on bottom picture. Ensure spacer fits snug between hanger and equaliser.

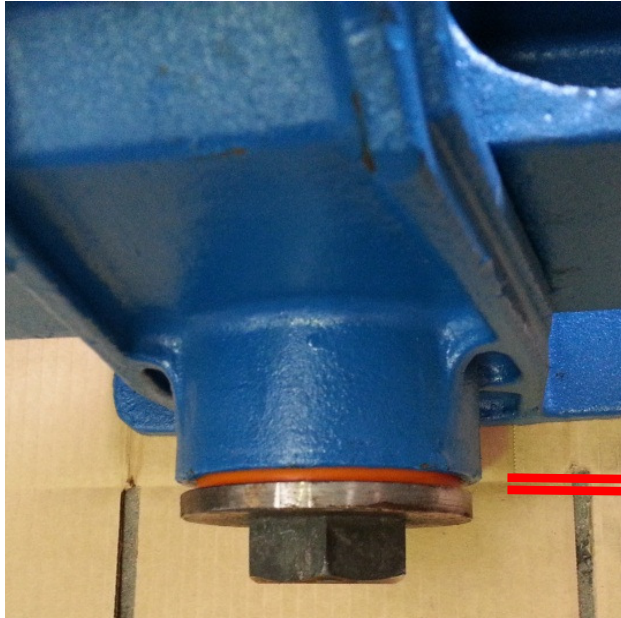


**Steel spacers
inserted into
casting**



Date: 03.04.2013 (Rev B)

- 6. Fit washer and nyloc nut and tighten accordingly using a pneumatic gun.
- 7. Check allowable protrusion below. Rework if necessary. Remove steel spacer.

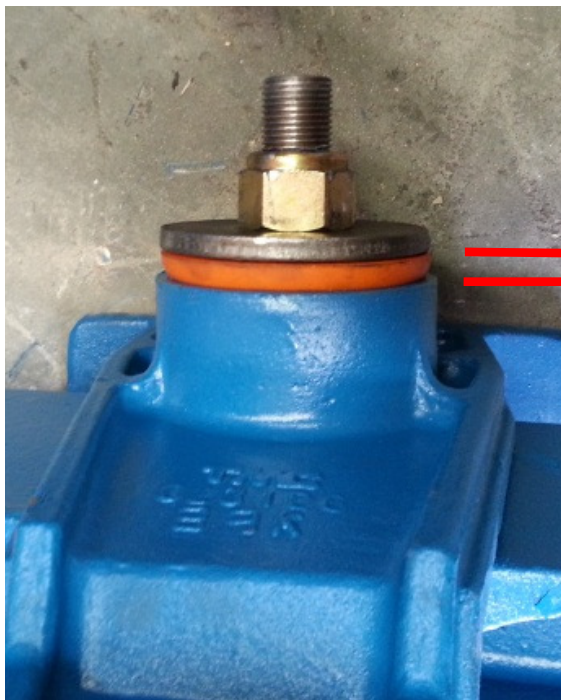


Allowable protrusion (Poly)
Min: 2mm
Max: 5mm

Allowable protrusion (Rubber)
Min: 7mm
Max: 10mm



- 8. See below picture showing excessive buldge/protrusion on poly bush.



Excessive poly protrusion shown (>5mm) – Unacceptable.



- 9. Torque settings:
Equaliser shaft nut 1" or M24 (Rubber & Poly)

220/270Nm.