

Date: 22.10.2020

Subject: Hanger and Airbag Pedestal Bracing recommendations.

This bulletin specifies the recommended procedure for front hanger and top airbag pedestals bracing in TMC air suspensions.

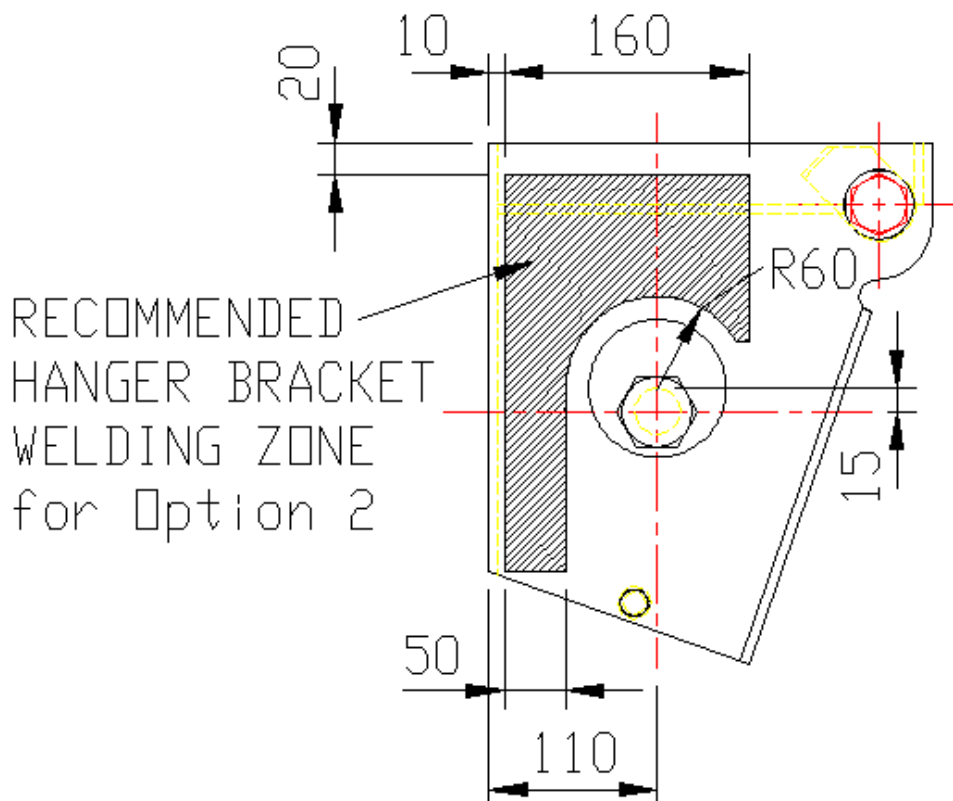
Chassis cross members should be mounted above all of the front hangers in the suspension.

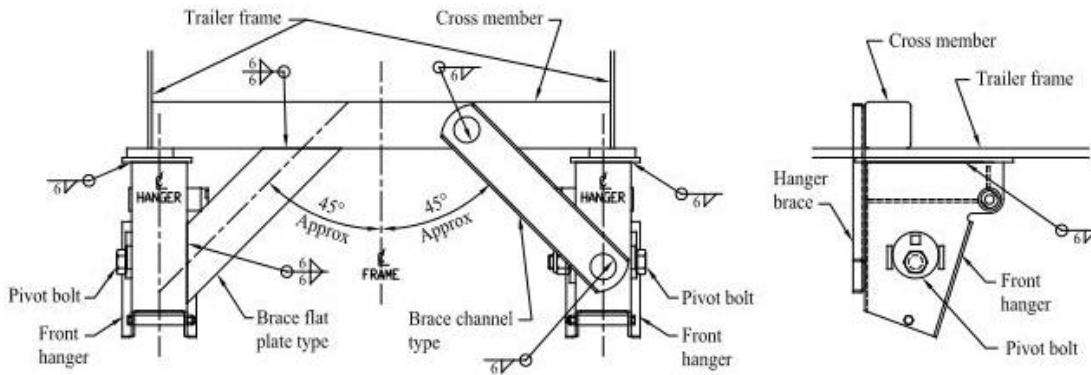
Top airbag pedestals should be gusseted to the trailer frame, as per the typical subframe layout shown below. This is sufficient to withstand the vertical forces transmitted.

The recommended hanger cross bracing is either:

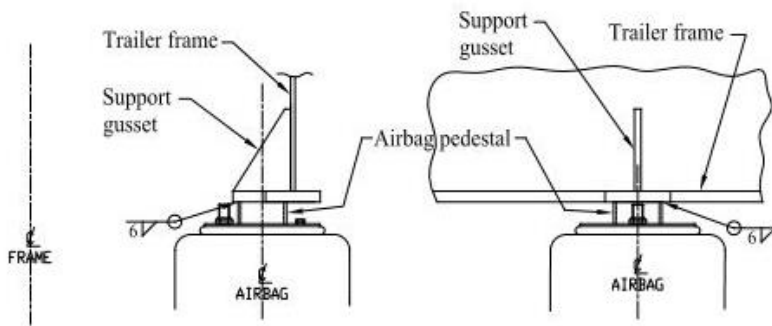
- 1) A diagonal channel bracing from the front/bottom of the hanger to the chassis cross member. Typically mounted at about 45 deg. Refer to "option 1" picture and typical subframe layout shown below.
- 2) A diagonal flat plate or channel bracing from the side of the hanger to the chassis cross member, at the inside hanger end. Refer to diagram below and "option 2" picture.

Both of these options provide more torsional flexibility than bracing from hanger to hanger via a cross tube / channel installation, which can produce an overly stiff connection. Options 1) or 2) would best suit the requirement of hanger brackets transmitting both lateral and vertical forces to the trailer's chassis.





Typical Front Suspension Hanger Brace Arrangement



Mounting of Airbag Pedestal to Frame.

Option 1
hanger bracing

Option 2
hanger bracing

