

Date: 18.05.2022

**Subject: Brake Chamber Installation Procedure**

This Bulletin specifies the recommended brake chamber installation and adjustment on all TMC Australia drum braked axles.

- 1) Identify the correct brake chamber size to use (spring brake or service chamber) based on the correct OEM brake calculation data. The booster size should be marked on the chamber.



- 2) TMC brake chambers are supplied with the cage tool fitted in either the storage holder or installed to the brake chamber itself.



Cage tool fitted in holder



Cage tool fitted to chamber

- 3) Pressurize the brake chamber (connect to the park brake port) to check the caged (brake released) position for the cage tool fitment. This should be with the push rod end visible at the park brake end (see 2<sup>nd</sup> picture below).



Push rod end not visible (uncaged position)



Push rod end visible (ready for cage tool fitment)

Date: 18.05.2022

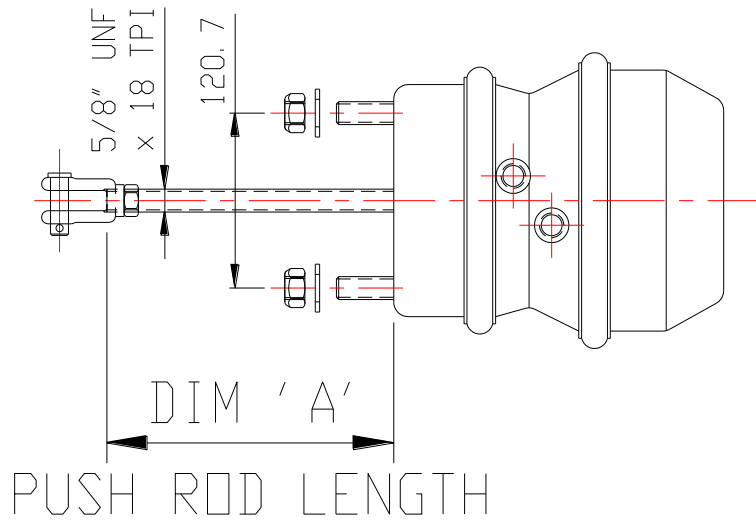
- 4) With the chamber pressurized, fit the caging tool to the brake chamber. Tighten the cage tool nut.



- 5) Now with the brake chamber set in the caged (brake released) position, the cut booster push rod length can be carried out as follows. The push rod lengths are the same for both manual and auto slack adjuster installations. **Based on the fixed or self steer axle model fitted, measure the push rod length from the face of the brake chamber as per Dimension 'A' shown below. Cut the required push rod length and install the lock nut and clevis as shown.**



**FIXED AND STEER AXLE MODEL PUSH ROD LENGTH:**



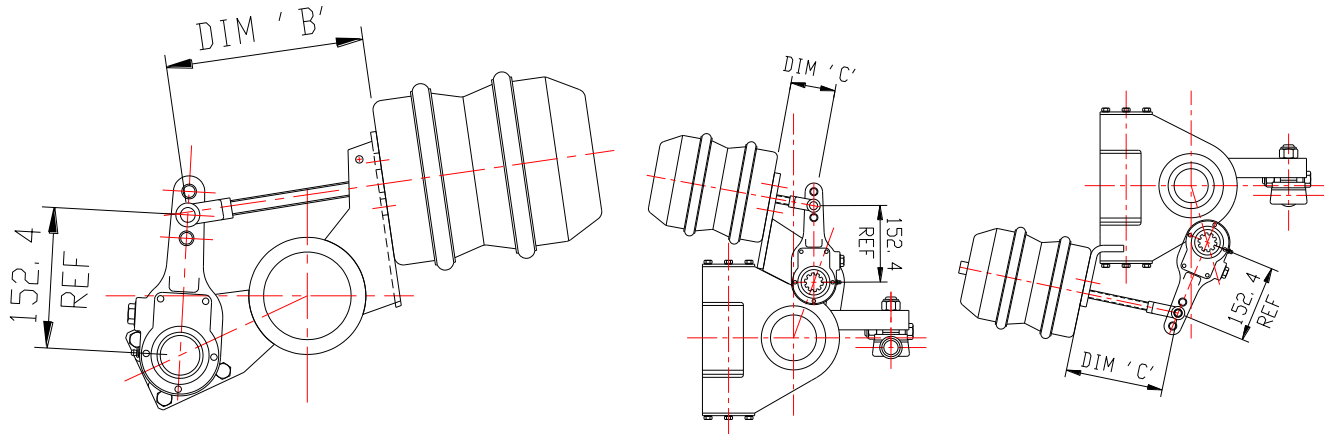
Fixed Axle Model	Axle Type	Dimension 'A' (mm)
PFRD-225-167, PFRD-245-167, PFRD-U90-167	22.5"	180
PFRD-225-138, PFRD-225-136S, PFRD-U82-136S	17.5" & 19.5"	110

Self Steer Axle Model	Axle Type	Booster Mounting Location	Dimension 'A' (mm)
SSRD-225-167	22.5"	01 - Bottom Mtg	155
		03 - Top Mtg	145
SSRD-225-138, SSRD-225-136S	17.5" & 19.5"	01 - Bottom Mtg	155
		03 - Top Mtg	52

**Note:** Push rod lengths shown apply to both spring brakes (maxis) and service brakes.

Date: 18.05.2022

- 6) Fit the brake chamber to the air chamber bracket on the axle and measure from the booster mounting face to clevis centre position in the caged (brake released) position, as per Dimension 'B' for fixed axles and Dimension 'C' for self steer axles as shown.



Fixed Axle Model	Axle Type	Dimension 'B' (mm)
PFRD-225-167, PFRD-245-167, PFRD-U90-167	22.5"	215
PFRD-225-138, PFRD-225-136S, PFRD-U82-136S	17.5" & 19.5"	145

Self Steer Axle Model	Axle Type	Booster Mounting Location	Dimension 'C' (mm)
SSRD-225-167	22.5"	01 - Bottom Mtg	190
		03 - Top Mtg	180
SSRD-225-138, SSRD-225-136S	17.5" & 19.5"	01 - Bottom Mtg	190
		03 - Top Mtg	87

- 7) Carry out the brake adjustment procedure, as per the TMC axle service manual drum brake, and in accordance with the OEM brake calculation data (slack adjuster setting and booster mounting hole position). This includes checking that when the brakes are released and applied, the angle between the brake chamber push rod and slack adjuster is greater than 90 degrees.